

C SERIES

LINEAR GAS FIREPLACES



enviro.com



Ledgestone Liner – Ultra High Definition Log Set



Fluted Liner – Ultra High Definition Log Set



Black Enameled Liner – Ultra High Definition Log Set





Ledgestone Liner – Bezel Base



Fluted Liner – Bezel Base



Black Enameled Liner – Bezel Base



Ledgestone Liner – Bezel Base



Fluted Liner – Bezel Base



Black Enameled Liner – River Rock Set with Twigs



Ledgestone Liner – Ultra High Definition Log Set



Fluted Liner – Ultra High Definition Log Set



Black Enameled Liner – Ultra High Definition Log Set





Ledgestone Liner – Full Glass Tray



Fluted Liner – Full Glass Tray



Black Enameled Liner – Full Glass Tray



Ledge stone Liner – Bezel Base



Fluted Liner – Bezel Base



Black Enameled Liner – Bezel Base





LedgeStone Liner – Full Glass Tray



Fluted Liner – Full Glass Tray



Black Enameled Liner – Full Glass Tray





Ledgestone – Ultra High Definition Log Set



Fluted Liner – Ultra High Definition Log Set



Black Enameled Liner – Ultra High Definition Log Set

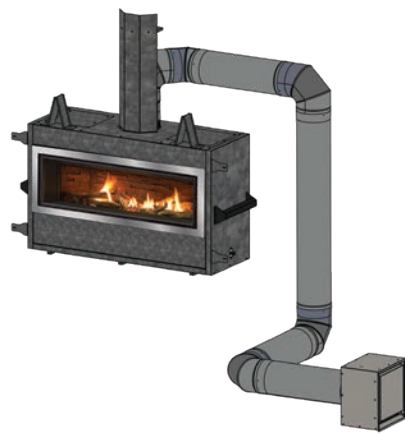
Specifications

	C34			C44			C60			C72		
BTU Maximum Input - NG / LP	30,000 BTU's			38,000 BTU's			51,000 BTU's			55,000 BTU's		
BTU Minimum Output* - NG / LP	9,750 BTU's			12,255 BTU's			16,702 BTU's			22,500 BTU's		
Turn Down - Valve 820 / Valve 885	Up to 50%			Up to 50%			Up to 50%			Up to 33 %		
FE Efficiency **	64.6%			64.3%			65.7%			61.16%		
Valve Configuration	Standing Pilot & IPI			Standing Pilot & IPI			Standing Pilot & IPI			IPI		
Venting	5" / 8"			5" / 8"			5" / 8"			5" / 8"		
Flex Venting	Up to 10'			Up to 10'			Up to 10'			10'		
Glass Size	HEIGHT	WIDTH		HEIGHT	WIDTH		HEIGHT	WIDTH	HEIGHT	WIDTH		
	14"	34½"		14"	44½"		14"	60½"	14"	72½"		
Visible Dimensions	16⅝"		36⅛"	16¼"		46⅛"	16⅝"		62⅛"		16⅝"	74⅛"
Minimum Framing Dimensions †	HEIGHT	WIDTH	DEPTH	HEIGHT	WIDTH	DEPTH	HEIGHT	WIDTH	DEPTH	HEIGHT	WIDTH	DEPTH
	65"	45"	20"	65"	55"	20"	72"	71"	20"	84"	83"	20"

* Calculated by (Max BTU Input) x 50% (Turn Down Valve) x (FE Efficiency) | ** Based on the measured P-4-15 rating of the IPI model. | † Please refer to owners manual for detailed installation instructions.

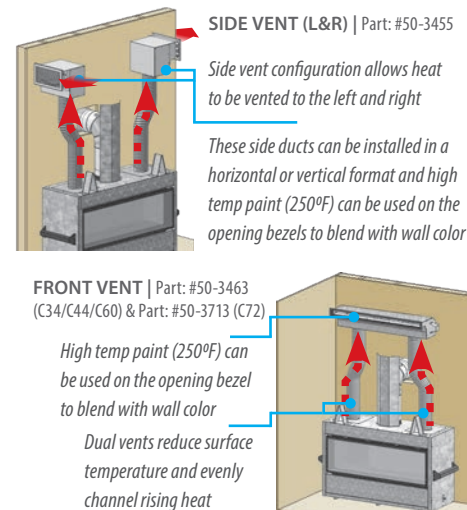
Power Vent Kit

- A minimum venting run of 10 feet
- A maximum venting run of 110 feet
- Max of 6 elbows in vent configuration
- Venting can run downward 4' below the unit
- Flush mount (paintable) termination
- Run Quiet Fan System (noise reduction)



Cool Surface System HDK

In the past, wall mounted televisions or treasured decor pieces would degrade over time from the excess rising heat produced by your gas fireplace. Our new **Cool Surface System** for the C Series allows you to make use of the valuable real estate directly above your linear gas fireplace. It can channel heat inside the wall and vent it out above the fireplace.



Ultra HD Log Set



Compatible with all units

Traditional Log Set



Compatible with the C44

Rock & Log Set



Compatible with the C44

River Rock Set w/Twigs



Compatible with all units

Full Glass Tray



Compatible with all units

Painted Steel Bezel Base



Includes Vermiculite
Included with all units

Black Glass Bezel Base



Includes Vermiculite
Compatible with all units

Halogen Light Kit



Compatible with the C34, C44, & C60

Iron Spheres Kit



Compatible with all units

Top Firebox Lighting



Included with all IPI units

Fluted Liner



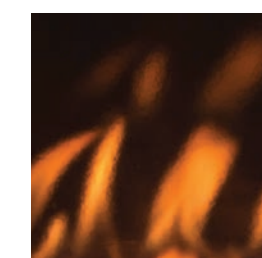
Compatible with all units

Ledgestone Liner



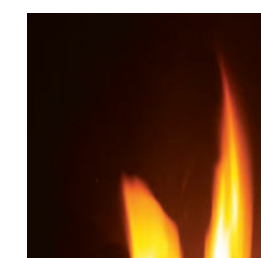
Compatible with all units

Black Enameled Liner



Compatible with all units

Painted Black Liner



Included with all units

Optional Surrounds

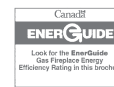


Borderview Surround **1 3/4 Slim Line Surround**
Painted Black

Borderview Surround in Brushed Nickel • Brushed Antique Copper Brushed Black Nickel • Powder Coated

Note: The C72 Borderview Surround is only available in Brushed Nickel and Powder Coated

The best way to visualize your dream fireplace at home is with the Enviro App!



Manufactured by Sherwood Industries Ltd. Victoria, BC, Canada | enviro.com

Printed in Canada, April 2020

